

PRELIMINARY DETAILS



RESIDENTIAL DEVELOPMENT
OPPORTUNITY

**SELF-CONTAINED OFFICE/
CLASS 'E' PREMISES
FOR SALE**

1,000 sq ft (93 sq m) GIA



**COLLINGRIDGE HOUSE • ONE ANGEL COURT • HIGH STREET
GODALMING • SURREY • GU7 1DT**

DESCRIPTION / ACCOMMODATION: The property comprises a self-contained Office arranged over two floors located in the centre of Godalming with scope for conversion in to apartments or a single dwelling.

The premises benefit from a mix of open plan and private office areas together with kitchen and WC facilities.

PRICE: £375,000.00 - Freehold with full vacant possession.



Rod Walmsley
rod@gascoignes.com

Andrew Russell
andy@gascoignes.com

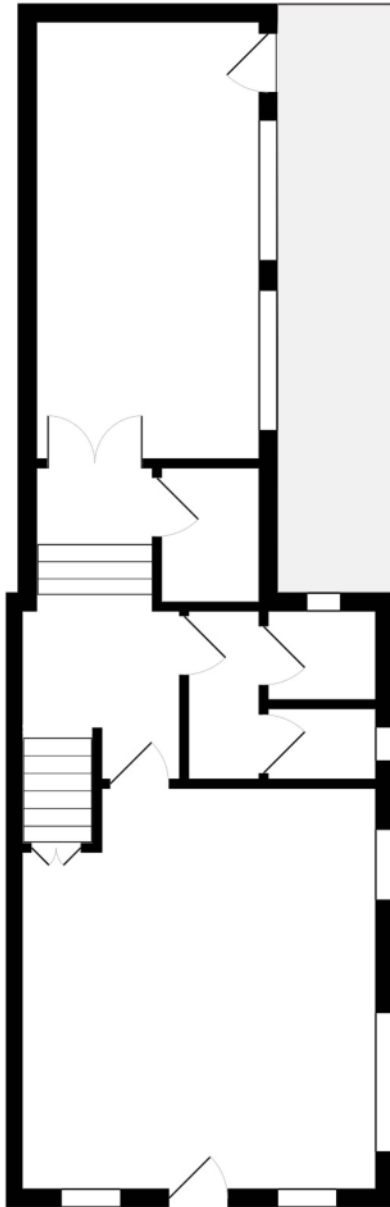
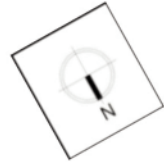
Gascoignes • 2 Gillingham House • Pannells Court • Guildford • Surrey GU1 4EU

T: 01483 538131

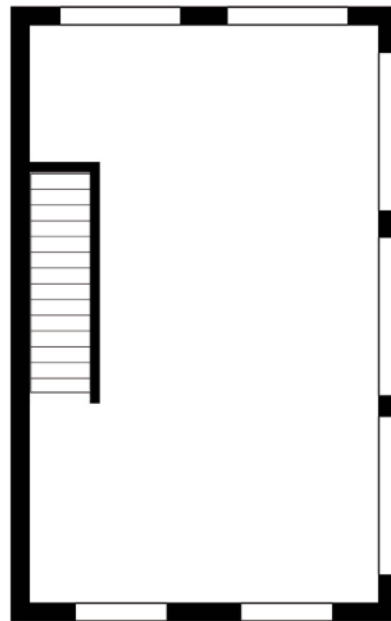
w: www.gascoignes.com e: enquiries@gascoignes.com

NOTE:

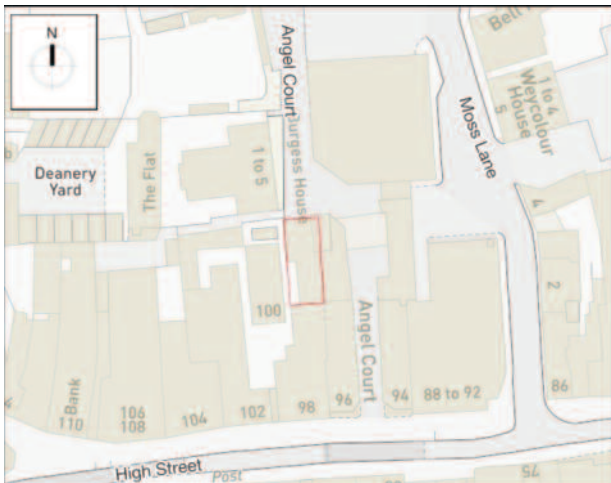
Gascoignes for themselves (and joint agents where applicable) and for the vendor or lessors of this property whose sole agents they are give notice that; (i) the particulars are produced in good faith, and are set out as a general guide only and do not constitute any part of a contract; (ii) All areas/dimensions quoted are approximate; (iii) the agents have not tested any of the services and no warranty is given or implied by these particulars; (iv) All prices or rents quoted as exclusive of VAT which may be applicable to transactions involving commercial property; (v) no person in the employment of Gascoignes has the authority to make or give any representation or warranty whatsoever in relation to this property. Gascoignes is a trading name of Gascoignes Commercial Ltd which is registered in England No. 4336372.



GROUND FLOOR



FIRST FLOOR



Home Standards Ltd

Building Surveys, Lease Plans & EPCs

(E) Info@HomeStandards.co.uk

(W) www.HomeStandards.co.uk

(T) 07734 841 524

Scale: 1:100 Paper size: A4

Issue date: 22nd November 2022

Issue number: 01 Page 1 of 1 HSC2292

Floor Plan: 1 Angel Court, Godalming, GU7 1DT